

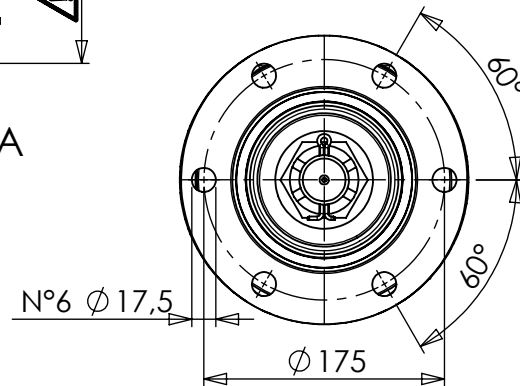
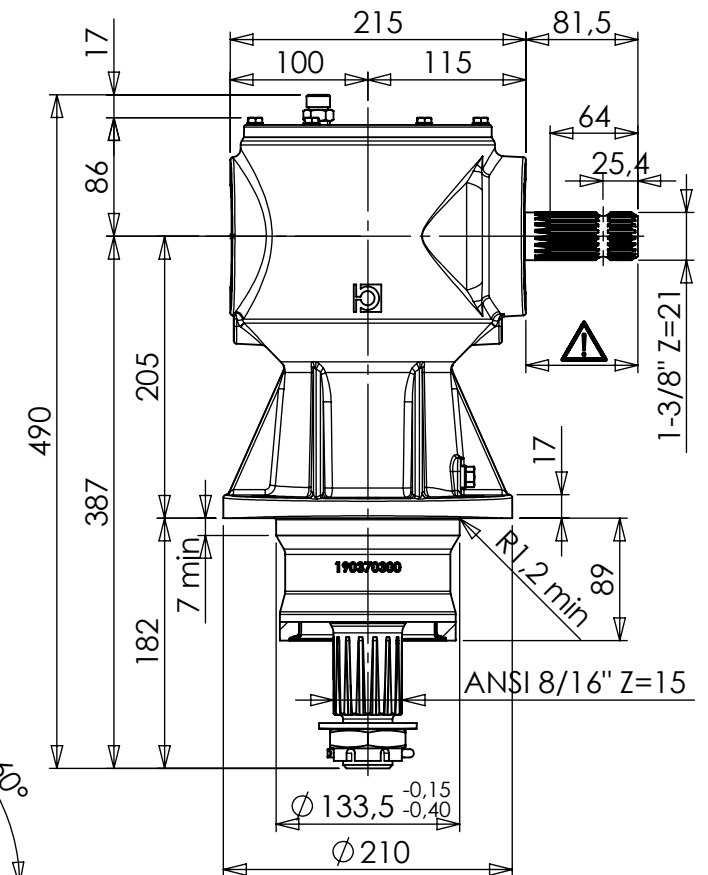
Tappo di carico, livello e sfiato
Oil filler level breather plug

N°8 M8x15
N°4 per lato
N°4 each side

Tappo di scarico
Oil drain plug

MOZZO COD.298614000
DA ORDINARE E
SPEDIRE SEPARATEMENTE
HUB COD.298614000 SUPPLIED
AND SHIPPED SEPARATELY

Vista parziale da A
Partial view from A



WARNING!

ROTATING SHAFTS MARKED
ARE NOT SHIELDED.
ANY SHAFT AND COUPLING NOT
GUARDED BY LOCATION MUST BE
SHIELDED BY AN INTERACTIVE
GUARDING SYSTEM.
BONDIOLI & PAVESI DECLINES
RESPONSIBILITY IF PROPER GUARDS
ARE NOT PROVIDED AND MAINTAINED.



VERNICIATURA / Painting

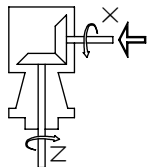
COLORE VERNICE Paint Color	NERO RAL 9005
RIF.SPECIFICA CLIENTE Customer Specification Ref.	/
RIF.SPECIFICA INTERNA B&P Specification Ref.	STBP06-V STBP02-V
VEDI SCHEMA / See Scheme	NY30800006
Solo le specifiche B&P sono completamente soddisfatte Only B&P specifications are completely satisfied	

Rev. Descrizione / Description

TIPO / TYPE	CLIENTE / CUSTOMER
3080	3600502 Dani-Tech A/S
TIPO DI MACCHINA / TYPE OF IMPLEMENT	PESO / WEIGHT (Kp)
	32.74
RIF.CLIENTE / CUSTOMER REF.	STUDIO / CONCEPT DRAWING
	DATA / DATE
	04-10-2016
	DESIGNATO / DESIGNED BY
	M.Pini

Data / Date Disegnato / Drawn by

S3080100017	0



RAPPORTO / RATIO

1:1
GIRI IN ENTRATA / INPUT SPEED
1000
POTENZA IN ENTRATA / INPUT POWER
90 CV - 66 kW